

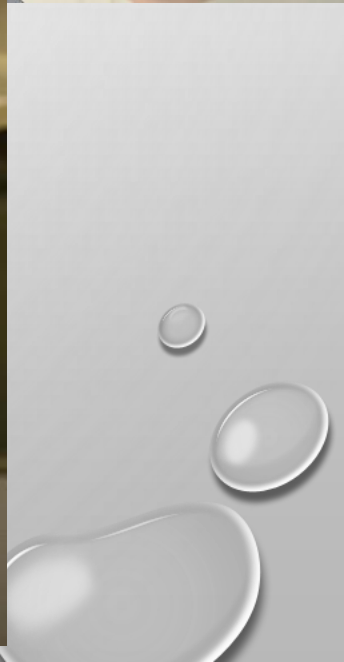
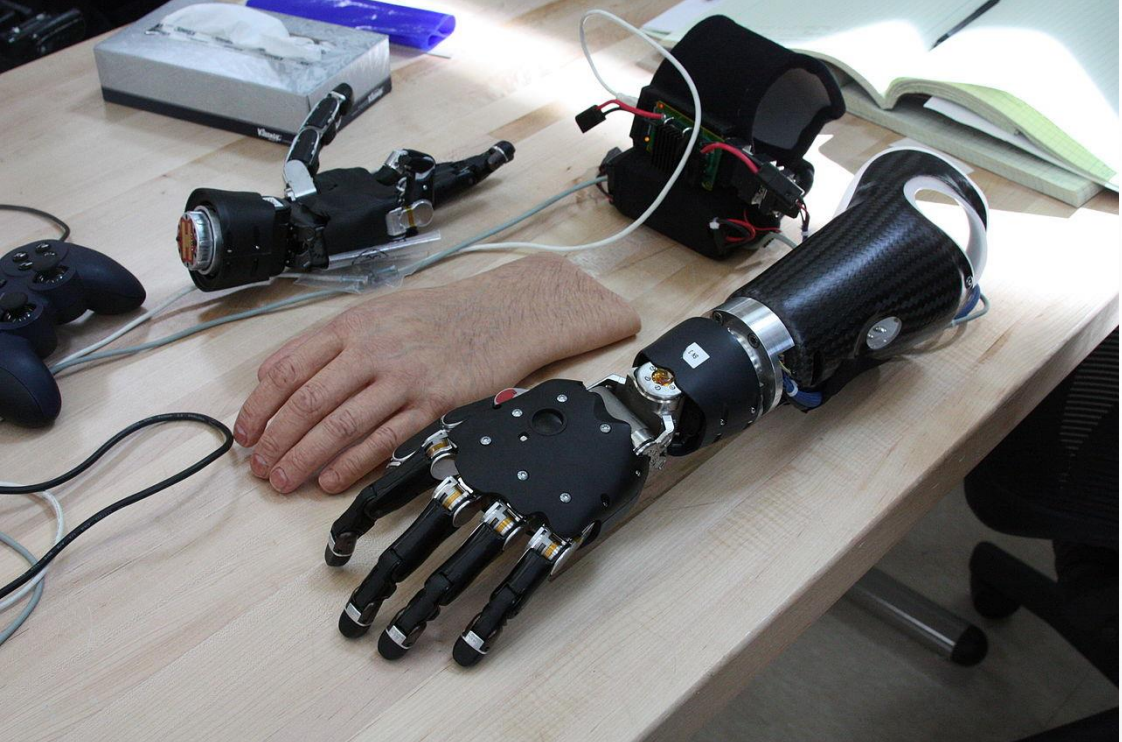
The background is a light gray gradient with several realistic water droplets of various sizes scattered across it. The droplets have highlights and shadows, giving them a three-dimensional appearance. The text is centered in the middle of the frame.

LET'S GET MOVIN!

HEAD, SHOULDERS, KNEES AND TOES

KNEES AND TOES



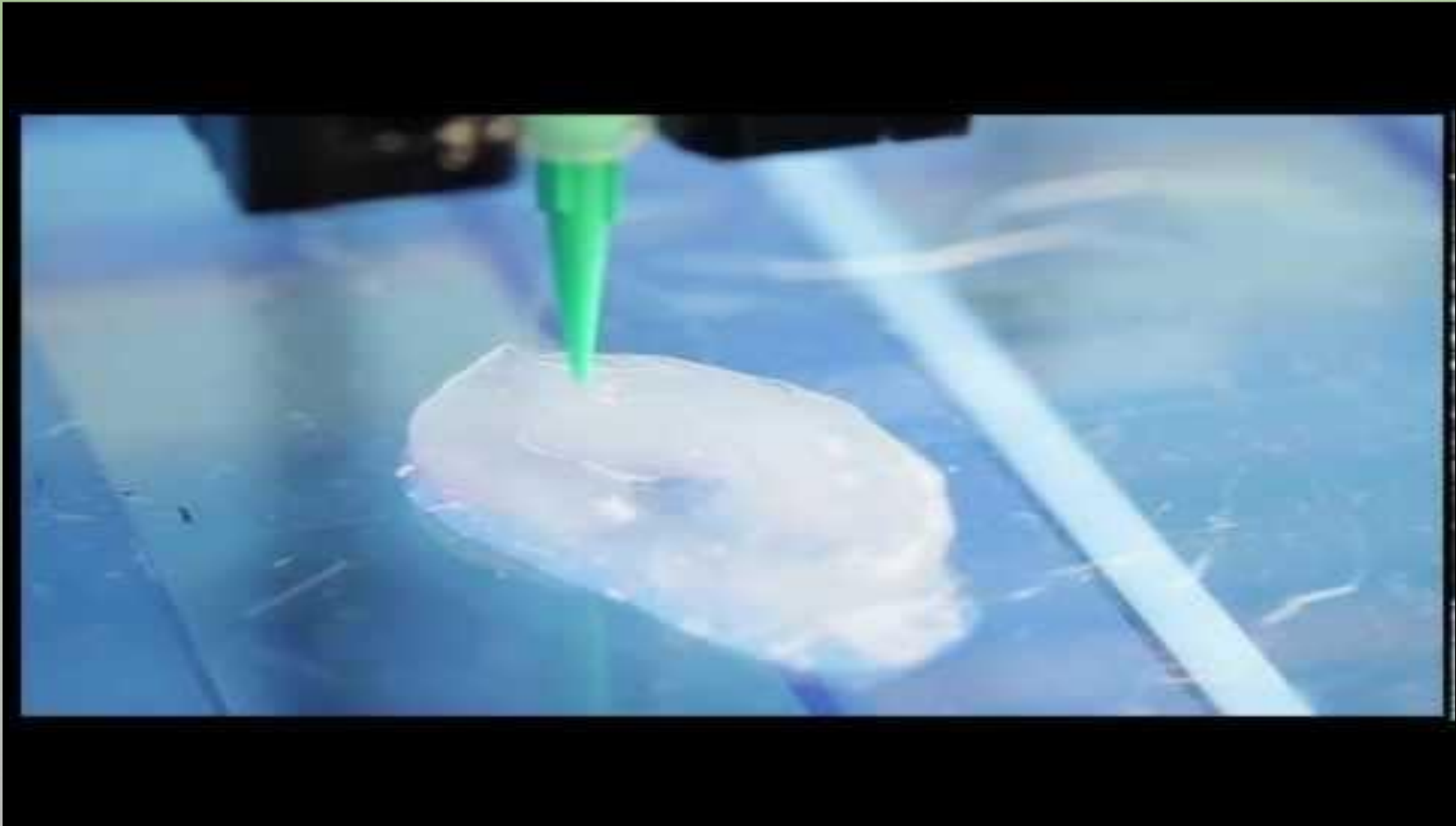




A BIOMEDICAL ENGINEER IS
SOMEONE WHO DESIGN'S
SOLUTIONS TO VARIOUS PROBLEMS
IN THE MEDICAL AND BIOLOGICAL
FIELD FOR THE ADVANCEMENT OF
OUR HEALTHCARE.

WHAT DO YOU THINK THAT MEANS?

3D PRINTING FOR OUR HEALTH



HOW WOULD YOU FEEL IF YOU
NEEDED A 3D PRINTED BODY PART?

WHAT CONCERNS WOULD YOU
HAVE ABOUT HAVING A 3D BODY
PART?

WHAT DO YOU THINK THE EASIEST
BODY PART WOULD BE TO MAKE?

WHAT DO YOU
THINK?

YOUR TURN!



