

Name: \_\_\_\_\_ Date: \_\_\_\_\_

## Topo Triangulation – 7<sup>th</sup> / 8<sup>th</sup> Grade Worksheet

### Instructions

You and a friend left to go on a hike today. You have been walking for a while, and now you do not know where you are. You have looked around and taken a few bearings of landmarks you see. Following is what you know:

### Clues

- A) Your hike started at “East Portal” 4 hours earlier.
  - B) Realizing that you were lost, you hiked part way up a nearby mountain/hill. You did not hike up to the top, but the top is directly south of you.
  - C) You can hear a railroad somewhere to the north.
  - D) You took a bearing of a big body of water at 100 degrees. You think you saw a dam near the water.
  - E) You see another mountain at 241 degrees.
  - F) You see a smaller lake at 305 degrees.
- 1) If someone was looking at you from the first body of water, Clue D, what direction would they have to be looking?
  
  - 2) Using your compass edge, draw a line from the landmark in the direction you wrote above. Your location is somewhere along that line.
  
  - 3) Which mountain do you think Clue E is talking about?
  
  - 4) Using the same method you used for the first line, draw the second line from the mountain/hill in Clue E. Your location is where the lines intersect.
  
  - 5) Which lake is Clue F talking about?

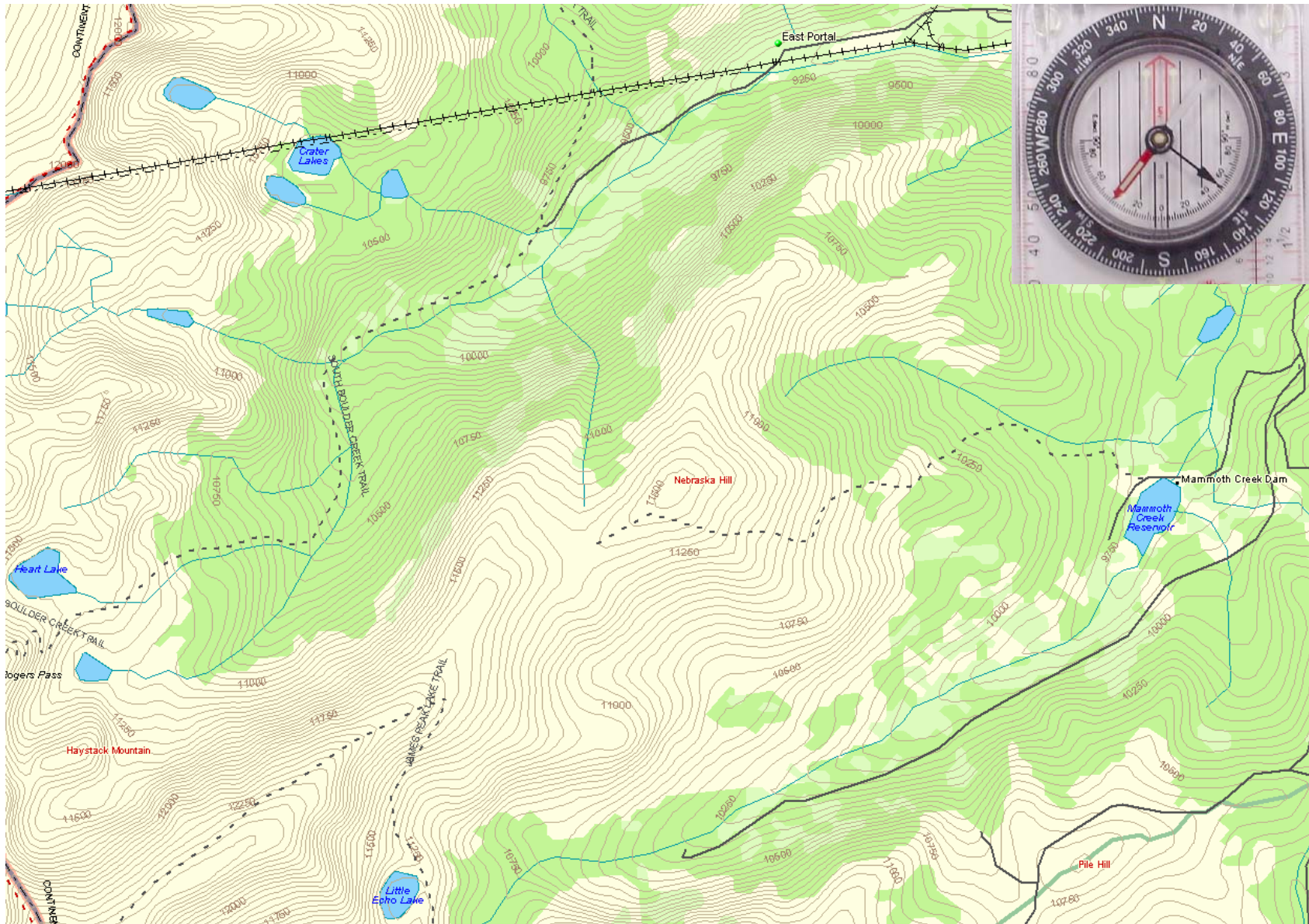


Photo courtesy of DeLorme: © 2002 DeLorme (www.delorme.com) Topo USA ®